

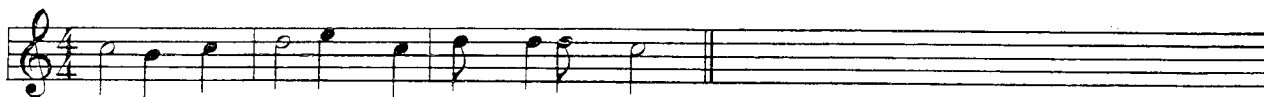
**More Notation**

Using the notation rules given, rewrite the examples correcting the mistakes.

1. When using more than one staff, notes that sound at the same time must be written so they line up vertically.



2. Space between notes should be in proportion to their time values.



3. Beams are usually used to connect two or more notes together, rather than using a series of separate flags. Use a straight edge to draw beams. Beams follow the direction of the notes within the group.



4. The whole rest is a thick horizontal line, drawn under and touching the fourth line of the staff. The half rest is a thick horizontal line drawn above and touching the third line of the staff. The hook of the eighth rest and the upper hook of the sixteenth rest are drawn in the third space. The quarter rest should be centered in the middle of the staff.



5. An accidental should be placed before the note it affects, and be on the same line or in the same space as the note.

